



## Automation and Controls

Integrated Flow Solutions Automation and Control systems are designed to monitor and control the packaged equipment. The controls can be skid mounted and prewired or remote mounted in an unclassified electrical area. Optionally, the control system can interface with the customer's plant control system. A typical control system includes a NEMA enclosure, power distribution components, control power components, programmable controller and on-skid wiring in conduit.



### Industries



POWER



OIL & GAS



GENERAL



EMISSIONS

### Benefits

- Single Source Accountability
- Pre-Packaged Modular Design Costs Less Than Component Based Site-Built Which Reduces Overall Project Cost
- Minimizes Field Erection Time -- Shorter Overall Project Delivery Schedule
- Complete System Function Testing Prior to Shipment
- 24/7 Customer Service

### Industry Standards

- NEC
- IEC
- UL 508 A
- NEMA

### Standard Features

- NEMA 4 Enclosures
- Flange Mounted Disconnect

### Standard Features (Continued)

- Main Circuit Breaker
- Control Power Transformer
- Branched Circuit Protection Up to 200 KAIC
- Fused Contactor Protection
- 2-Line Text Display
- Finger Safe Enclosure
- Laser Impregnated Heat Shrink Label

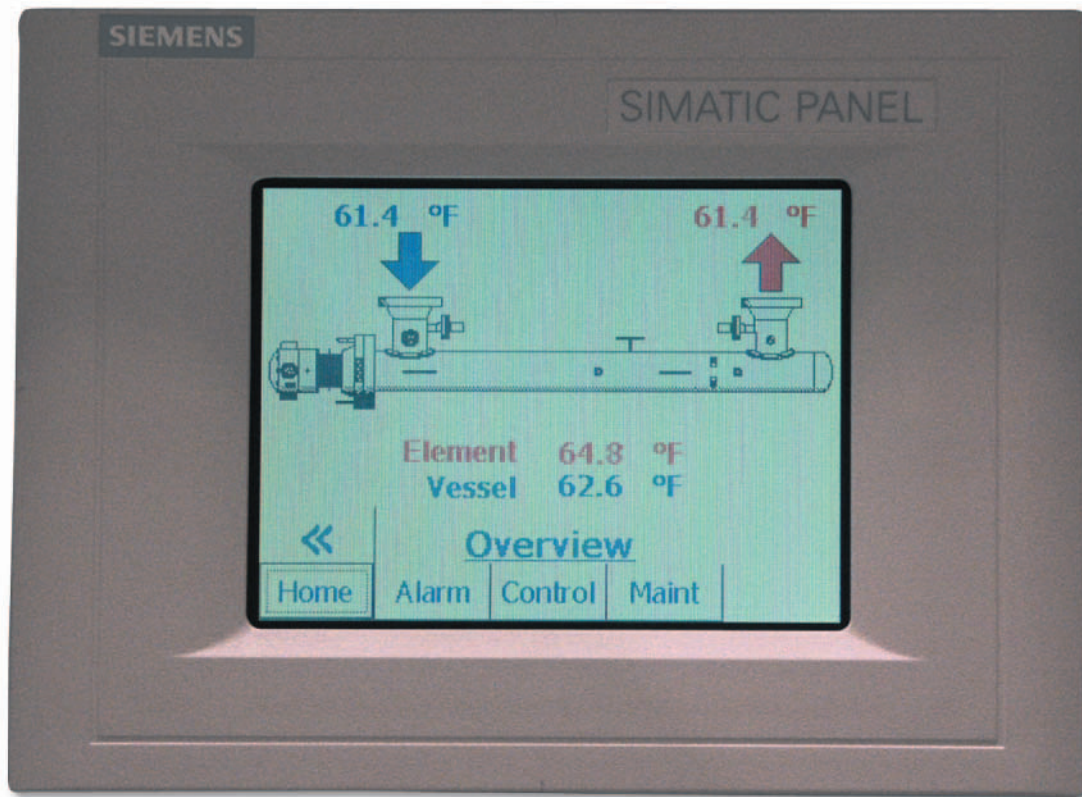
### Optional Features

- NEMA 4X & 7
- Class 1, Div. 2, Groups A, B, C, D
- Class 1, Div. 1
- Z-Purge
- X-Purge
- Main Circuit Breaker with 65 KAIC
- Modbus, Data Highway Plus (AB), PROFIBUS, etc. Protocols
- Color Touch Screen Operator Interface

### Additional Services

- Witnessed/Non-Witnessed Performance Testing
- Installation/Training/Start-Up Supervision
- Extended Warranty

# Automation and Controls



Typical IFS touch screen display with  
**IntegraHeat™** Electric Process Heater under full shop testing.



Skid mounted and pre-wired control panel.



Downloading pre-tested programs into  
the PLC for complete package testing.